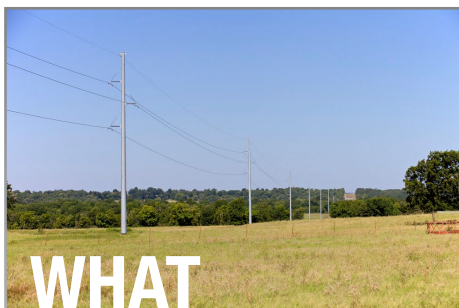


Clendenin – Walton

Area Improvements Project

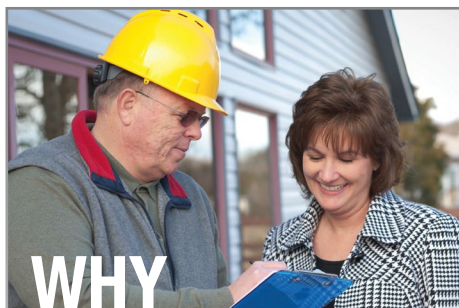


Transource® Energy, an affiliate of American Electric Power, plans to strengthen the power grid in West Virginia by investing about \$75 million in the transmission infrastructure. The Clendenin – Walton Area Improvements Project includes construction of approximately 25 miles of new 138-kilovolt (kV) transmission line, three new substations and making additional upgrades to existing substations and other equipment along the project route. Construction is expected to start in 2017 and conclude by mid-2019.



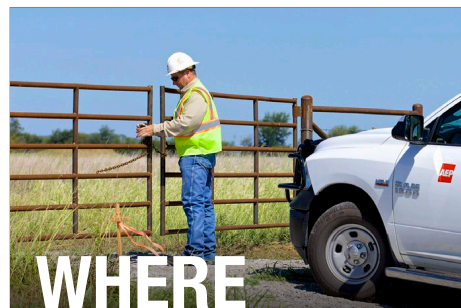
WHAT

The Clendenin – Walton Area Improvements Project consists of building approximately 25 miles of new transmission line using steel H-Frame structures, three new substations and upgrading existing transmission facilities. The project will provide a robust transmission grid for customers in Kanawha and Roane counties.



WHY

PJM Interconnection, the regional transmission organization responsible for monitoring the electric grid in 13 states, including West Virginia, identified the need for the project in its 2014 Regional Transmission Expansion Plan. In 2015, PJM awarded the project to Transource, a partnership between AEP and Great Plains Energy. In June, the Public Service Commission of West Virginia granted Transource approval to construct the project. Appalachian Power and First Energy will construct additional facilities to incorporate the grid upgrades.



WHERE

The proposed Transource substation near Charleston will be on the east side of the city, just south of Rutledge Road. A transmission line will exit the substation and run east for about 2 miles past the city limits and connect with an existing transmission line in Kanawha County. The remaining 23 miles of new transmission line will originate from the existing Thorofare Creek Substation, just east of Clendenin. The proposed route will track north across Interstate 79 to a new Appalachian Power substation in Walton. From there, the line travels east past Looneyville and Tariff. The line will end at a proposed substation location about 3 miles east of the Roane-Calhoun county line.

What is Transource?

Transource is a partnership between American Electric Power (AEP) and Great Plains Energy (GPE) focused on the development and investment of competitive electric transmission projects across the United States. AEP and GPE combined own and operate nearly 50,000 miles of transmission lines and have over 100 years of expertise in all areas of electric transmission.

Substations

Substations serve as electrical intersections converting the power to lower voltages so it can be distributed onto distribution lines that deliver electricity to where we live and work. Substations step down the voltage to levels for use in homes, businesses and industrial facilities.



*Substation shown is a general depiction of the proposed substations that will be built for this project. It does not represent final design.

Proposed Structure*

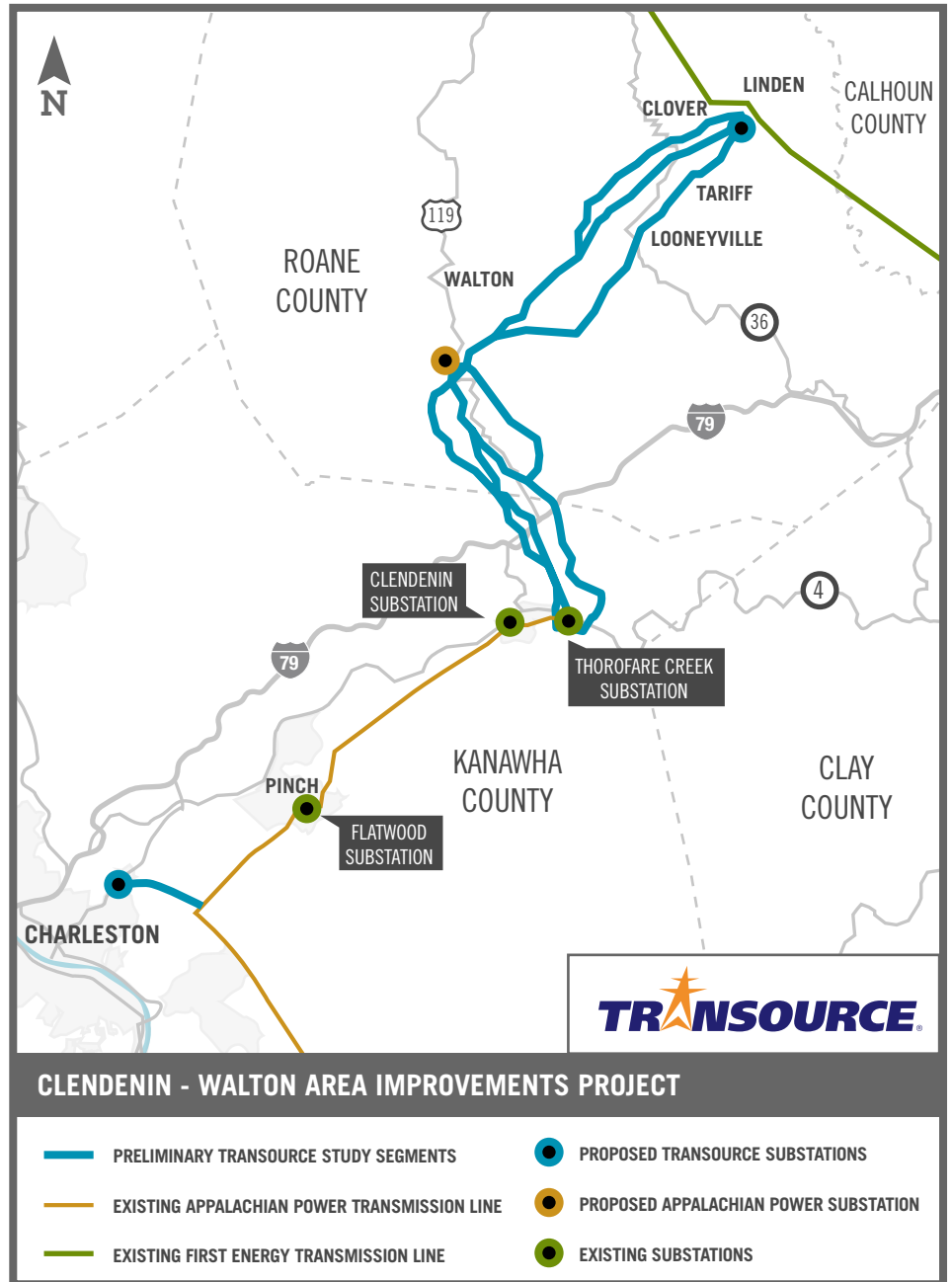


*Exact structure and height may vary from those shown

Typical Right-of-Way:
100-foot wide

Typical Pole Height:
100-foot tall

Project Map



Transource is committed to carefully balancing the energy needs of homes and businesses while protecting the environment.

Contact:

George Porter

Project Outreach Specialist
540-562-7092
gaporter@aep.com

If you have questions or need more information visit the project website at:
www.TransourceEnergy.com/Projects/Clendenin

